

# TATES

020 7602 6020



## Welbeck Court, London W14 8XW

**£4,700 Per calendar month**

- Three double bedrooms
- Finished to High Standards
- Wooden Floors Throughout
- Parking Option Available
- Balcony
- Two Bathrooms
- Just Been Renovated
- Gated Red Brick Mansion Block
- Third floor (with lift)
- Close to Kensington High Street & Holland Park

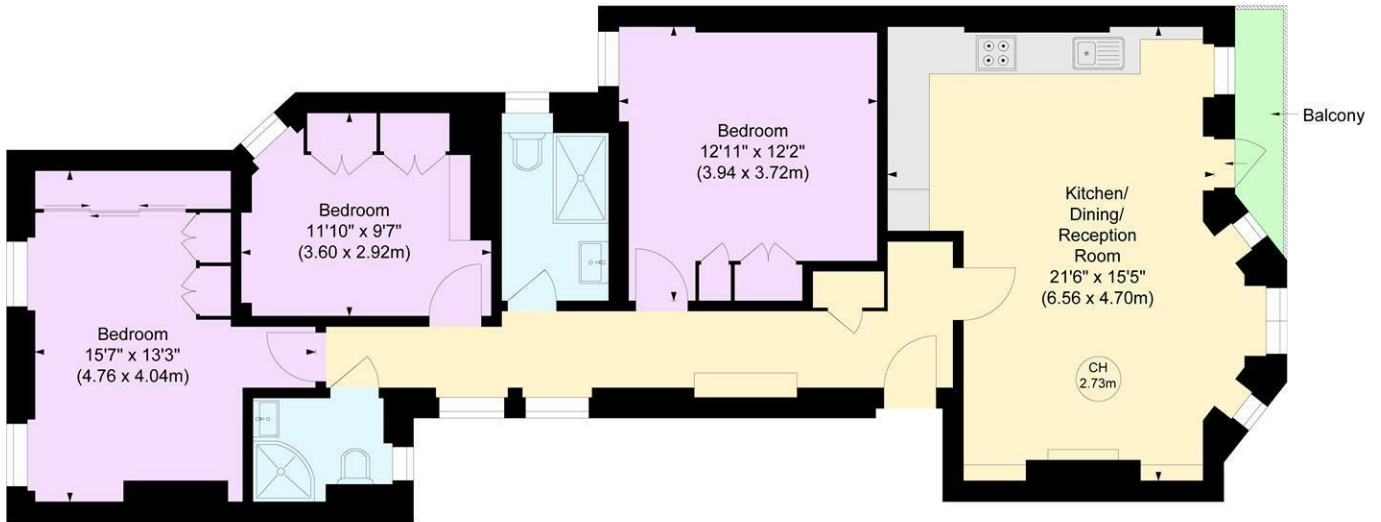
# WELBECK COURT, W14

Approximate gross internal area

969 sq ft / 90.00 sq m

Key :

CH - Ceiling Height



## THIRD FLOOR

Not to scale, for guidance only and must not be relied upon as a statement of fact.  
All measurements and areas are approximate only

Whilst these particulars are produced in good faith and are believed to be correct, no guarantee is given, nor any responsibility accepted, by Tates nor by any of its representatives, for their accuracy. The particulars do not constitute part of any offer or contract, and it is recommended that such things as measurements, condition, structure, services, appliances, fixtures and fittings and facilities are all independently assessed by the prospective purchaser or renter of the subject property prior to committing to any contract.

Energy Efficiency Rating		
	Current	Potential
Very energy efficient - lower running costs		
(92 plus) <b>A</b>		
(81-91) <b>B</b>		
(69-80) <b>C</b>		
(55-68) <b>D</b>		
(39-54) <b>E</b>		
(21-38) <b>F</b>		
(1-20) <b>G</b>		
Not energy efficient - higher running costs		
	65	78
England & Wales		
EU Directive 2002/91/EC		

135 Hammersmith Road, West Kensington, London W14 0QL

mail@tatesestates.co.uk

tatesestates.co.uk

Tates (Agents) Ltd. Registered in England and Wales No. 02356337

Registered Office: Imperial House, 8 Keane Street, London WC2B 4AS

